

SCHAP™

LABORATORY SERVICES, LLC

DRY FOG TESTER



DRY FOG TESTERS
LAB SERVICES
CONSUMABLES
CALIBRATIONS
RENTALS



SCHAP DRY FOG TESTER

FEATURES



BY NATURE VOLATILE ORGANIC COMPOUNDS (VOC) EASILY EVAPORATE FROM A LARGE VARIETY OF NATURAL AND MANMADE MATERIALS.

THE SMELL YOU MAY ASSOCIATE WITH FRESH PAINT, ADHESIVES OR OTHER BUILDING MATERIALS AND THAT “NEW CAR SMELL” ARE ALL COMPOSED OF VOCs.

THE TERM “FOGGING” PRIMARILY REFERS TO THE EVAPORATED VOLATILE ORGANIC COMPOUNDS OF VINYL (PVC), TEXTILES OR LEATHER CONDENSING ONTO GLASS.

DRY FOG TEST ADVANTAGE

01

NO FLUIDS NEEDED

The maintenance-free, dry fog tester uses no fluids, saving thousands of your hard-earned dollars over the life of the tester. No more mess on your counters, floors, and test samples.

02

FAST CLEAN-UP

Between tests, simply change out glassware & samples. The oil-free design uses a completely dry environment to complete your tests. It's fast, which gives you more time to test samples.

03

RELIABILITY

When you see the name Schap on the front of the dry fog tester, you know it has a robust and reliable design. Down time takes away from testing samples. Turn it on and trust it.

04

REPEATABILITY

Test-after-test, your results will be consistent. The only way to identify a sample that is out of compliance is to test it in a device that can be fully trusted.

05

VERSATILE

No need to throw away your 400 ml beakers or run two different testers to accommodate various test specifications. Our tester will work with either 400 ml or 1 liter beakers (adapter required).

06

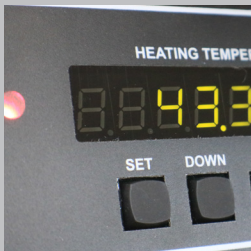
EASE OF USE

Did we mention the oil-free design? The dry fog tester plugs in and turns on. Drop in your samples, lower the lid, and you are testing. That's it!



The Future |

OF AUTOMOTIVE FOG TESTING



FOG TESTER SPECIFICATIONS

Fogger Weight 170 lbs / 77 kgs	Shipping Weight 230 lbs / 104 kgs
Stations 6	Specifications DIN 75201 / ISO 17071
Dimensions 25" x 16" x 17" (D,W,H) 406 mm x 635 mm x 432 mm	



SCHAP LABS...

WHY CHOOSE US

Our made in the USA fog tester uses six large, 1 liter beakers to accommodate a range of test samples and permits the use of less expensive square glass plates for all tests. The cooling and heating systems use reliable solid state technologies to eliminate the mess and expense of thermal fluids while still providing excellent thermal control and maximum uptime. Solid state silicon heaters give you the reliability and dependability you need and expect from Schap Laboratories. Clear digital displays allow the operator to see the test status. The hinged pop-up lid makes for easy test setup, sample change over, and clean up time. This results in a lower competitive purchase price, dependable operation and lower operating costs.



SUPPLIED WITH YOUR DRY FOG TESTER

- 6 SCHAP LAB 1 LITER BEAKERS
- 6 SCHAP LAB HOLD DOWN RINGS
- 6 SCHAP LAB SILICONE SEALS
- 24 GLASS PLATES
- ISO/IEC 17025 CALIBRATION

TIME IS MONEY

RAPID CHAMBER COOLER

The rapid cooler reduces the time to cool a six station Schap fog tester from higher test temperatures to lower test temperatures. Cooling time can be reduced by as much as **75%** allowing more tests at varying temperatures to be completed with less down-time.



Plugs into 120v Outlet



OIL Vs. DRY

INNOVATION IS OUR STANDARD

The Schap Fogging Tester complies with specifications DIN 75201, and ISO 17071.

Schap's breakthrough design does away with the mess, cleanup and frustration of liquid baths.

Our unique oversized 1-Liter beakers accommodate a large range of materials

No need to purchase expensive thermal fluids

Quick sample change-over, no need for cleanup, which equals lower operating costs and no plumbing required.

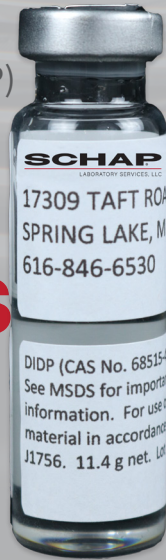
➔ FACT

As the evaporation continues over time the VOC content depletes resulting in material fatigue and premature aging where the interior components become hard and brittle.

CONSUMABLES

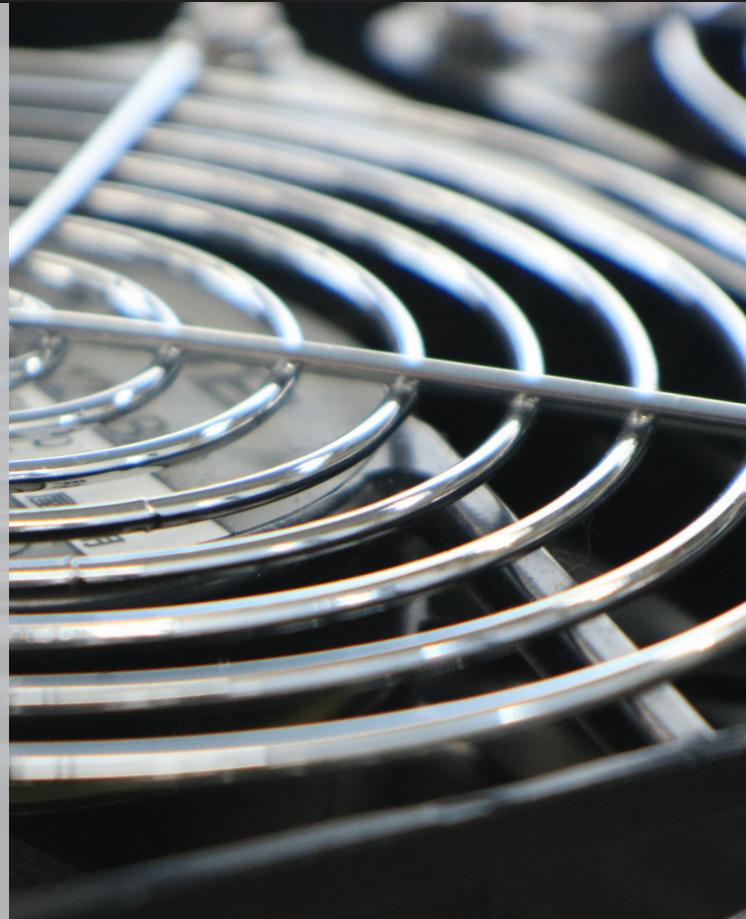
PRODUCTS 2019

- SCHAP LAB 1 LITER BEAKERS
- SCHAP LAB HOLD DOWN RINGS
- SCHAP LAB SILICONE SEALS
- GLASS TEST PLATES
- DIISODECYL PHTHALATE (DIDP)



ACCESSORIES

- RAPID CHAMBER COOLER
- DESICCANT CABINET
- SAMPLE DIE



SUPPORT

SCHAP LAB SERVICES

We are an independent, third-party test lab accredited to ISO/IEC 17025 by A2LA. We are built on over 100 years worth of executing test programs, and building test machines.

We offer a wide range of capabilities to test materials such as leather, fabric, foam, rubber, plastic, and adhesives. We also offer mechanical, durability and life cycle testing of subcomponents, full assemblies and mechanical systems.

- Calibration
- DVPR Support
- Material Testing
- Durability and Life Cycle testing

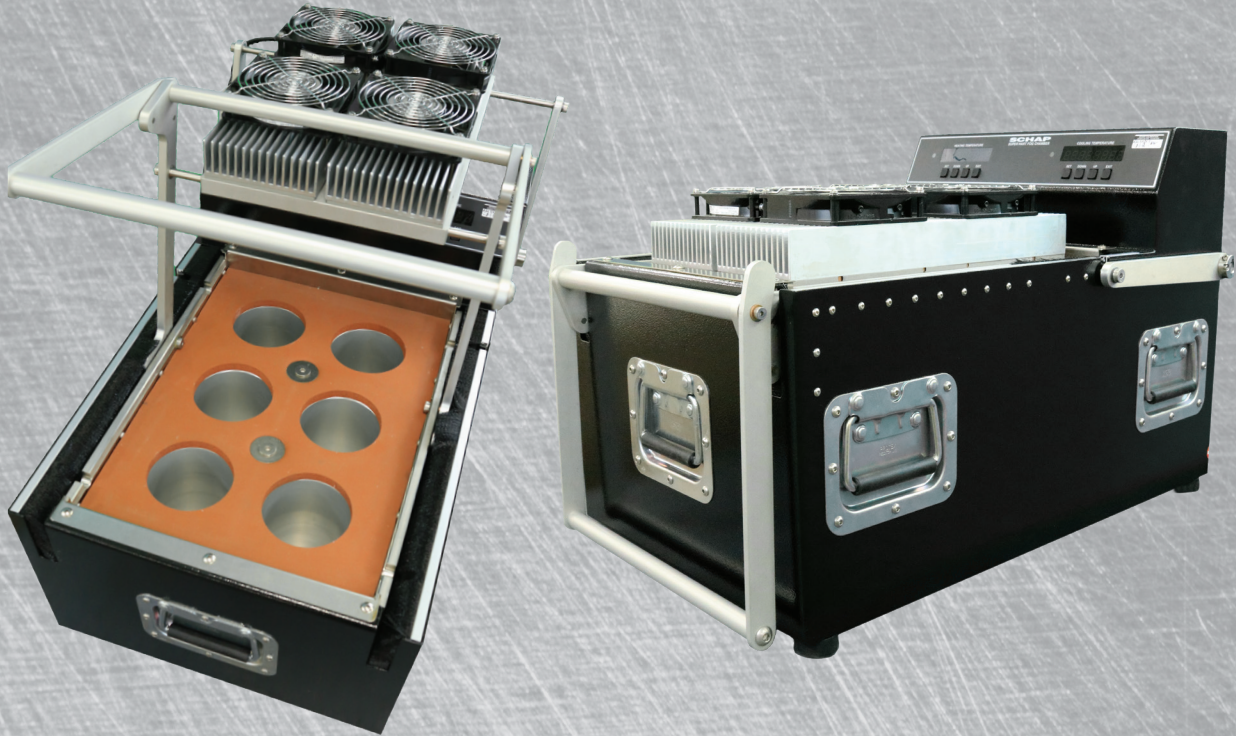
Visit schaplab.com for more info



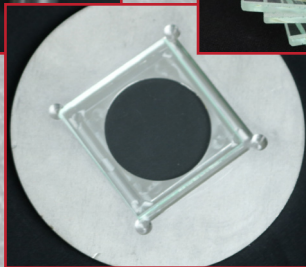
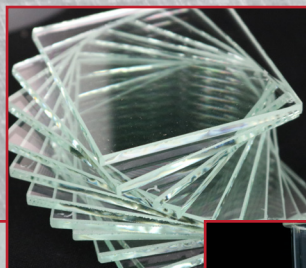
SCHAP™

LABORATORY SERVICES, LLC

DRY FOG TESTER



CONSUMABLES AND ACCESSORIES



SCHAP™

17309 Taft Rd. Spring Lake, MI 49456

P : (616)-846-6530 • E : info@schaplab.com • W : www.schaplab.com

© 2018 ALL RIGHTS RESERVED.